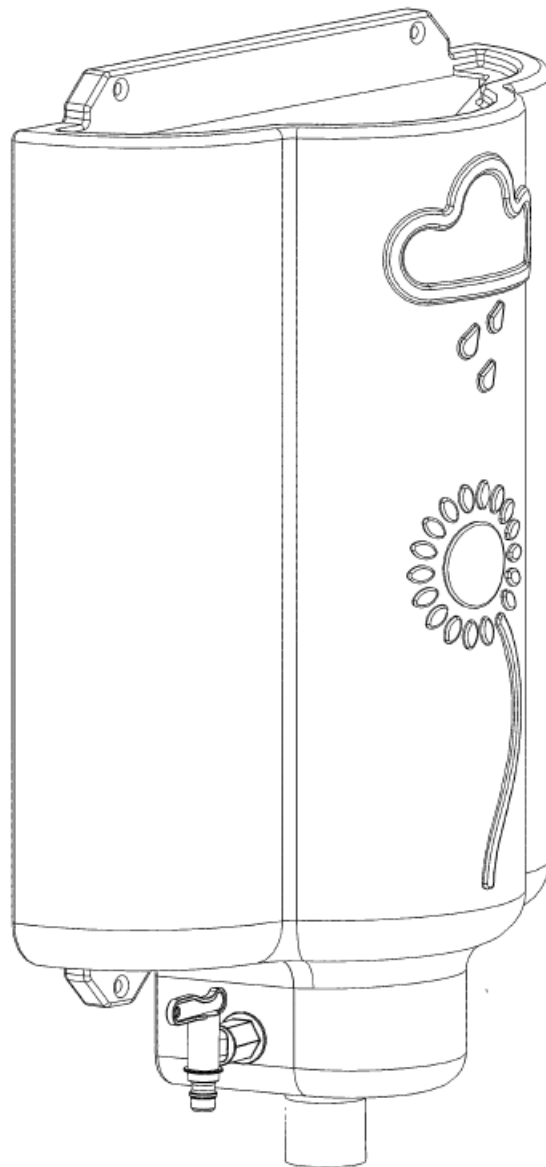


rainwaterhub

CONGRATULATIONS!

You are less than an hour away from years of easy and effective rainwater harvesting with the Rain Water Hub.

PLEASE DON'T GET TOO EXCITED AND FORGET TO FIRST READ THESE INSTRUCTIONS AND WATCH THE VIDEOS AT www.rainwaterhub.com



Thanks for purchasing the Rainwater Hub. If you have any questions please contact us at: 1-888-214-HUBS (4827) or email us at info@rainwaterhub.com.

IMPORTANT SAFETY INSTRUCTIONS – SAVE THESE INSTRUCTIONS – PLEASE READ ENTIRE INSTRUCTIONS PRIOR TO USE

– RDP Garden Products is not responsible for damage or injury caused by incorrect assembly or use.

WARNING:

Water collected via the Rainwater Hub from roof runoff is a potential water contamination hazard. Do not let people or animals drink water collected from roof runoff. Water collected from roof runoff is non-potable and should only ever be used for outdoor watering, irrigating and other outside uses.

WARNING:

Electrical Hazard. If a downspout contains electrical cables of any sort, there is a potential danger from electrocution or fire during installation. Do not proceed without consulting with a qualified electrician or contractor.

WARNING:

Downspout edges may be sharp. Wear protective gloves when cutting or handling downspouts. To prevent eye injury, always wear safety glasses when cutting or handling downspouts.

RDP Garden Products is not responsible for any damages or injuries caused as a result of or by improper installation.

WARNING:

This product contains small items that could be a choking hazard if swallowed.

WARNING:

Avoid potential personal injuries and property damage!

**Do not use this product for any purpose not explicitly specified.
The wall must be capable of supporting a sheer weight of 90lbs.**

If you do not understand these instructions, or have doubts about the safety of the installation, assembly or use of this product, contact us at info@www.rainwaterhub.com, or call a qualified contractor.

Supplied Parts and Hardware

PLEASE OPEN THE RAINWATER HUB FROM THE END INDICATED.

BEFORE STARTING ASSEMBLY, PLEASE VERIFY ALL PARTS ARE INCLUDED AND UNDAMAGED. IF ANY PARTS ARE MISSING OR DAMAGED, CONTACT US AT 1-888-214-HUBS (4827) OR AT INFO@RAINWATERHUB.COM NEVER USE DAMAGED PARTS!

THESE INSTRUCTIONS AND ANY OF THE ILLUSTRATIONS COVERING THE INSTALLATION OF THE RAINWATER HUB MUST BE REVIEWED PRIOR TO THE INSTALLATION.

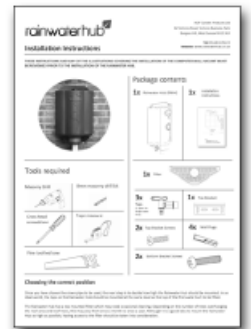


Package contents

1x Rainwater Hub (RWH)

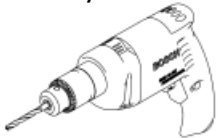


1x Installation Instructions



Tools required

Drill, masonry if necessary.



5/16th drill bit, again masonry is required.



Cross head screwdriver

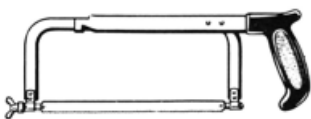


Tape measure

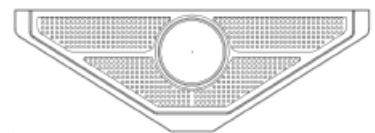


Safety Equipment
(Eye Protections, Gloves)

Hack saw, or tin snips.

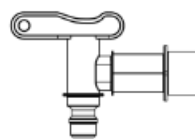


1x Filter



3x

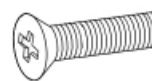
Faucets
(1 spare)



1x Top Bracket



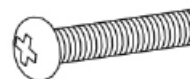
2x Top Bracket Screws



4x Wall Plugs



2x Lower Bracket Screws



1x Pencil



Please read through all instructions before beginning the installation of your Rainwater Hub. If improperly installed and/or maintained there is potential for damage to your home or person.

Installing the RWH

Choosing the Right Height:

Select downspout and determine height to mount RWH. Bottom of RWH should be above top of first rain barrel. Higher RWH is mounted further and faster rainwater will flow. Keep in mind access filter and disconnect hoses if required.



1. Measure a 27 1/2" length of downspout and remove.



2. With the section removed, you are now ready to attach the mounting bracket.



3. Position the top bracket 1" below the downspout and mark the holes to be drilled in the **VERTICAL SLOTS** using the pencil provided.



4. Drill in the centre of the pencil lines and insert the wall plugs (masonry wall).



5. Through the **VERTICAL SLOTS**. Attach to the wall with wall plugs and **COUNTERSUNK** screws. Do not fully tighten yet.



6. Holding the RWH at slightly less than 90 degrees, clip top bracket of RWH onto the mounting bracket on wall. Allow RWH to pivot down so that is flush with wall. Check alignment and adjust if necessary. Remove RWH tighten top screws fully.



7. Re-hang RWH and mark drill holes for bottom bracket. **REMOVE** RWH and drill pilot holes (wood siding) or holes for masonry wall plugs.



8. Insert wall plugs if used. Re-hang RWH. Do not screw in lower bracket yet.

Installing the Rainwater Hub



9. Measure and cut the lower section of downspout.



10

10. Insert RWH into downspout by angling both forward until they meet and then lowering them back together until flush with wall.



11

11. Re-fit lower downspout section.



12

12. Now secure the lower bracket of the RWH using the two round-head or domed screws.



13

13. Screw in faucets with o-rings. Ensure secure and tight fit, but do not over-tighten.



14

14. Attach hose connectors, and insert filter. The installation is now complete.

LIMITED TEN YEAR WARRANTY

RDP Garden Products warrants to the original purchaser that its Rainwater Hub product is free from defects in materials and workmanship appearing under normal use within ten (10) years after the date of purchase. This warrant does not cover damage to Rainwater Hub products caused by abuse, acts of God, your failure to follow product instructions, mishandling or unauthorized repair.

THIS WARRANTY IS IN LIEU OF ALL OTHER EXPRESS WARRANTIES, AND ANY IMPLIED WARRANTIES, INCLUDING BUT NOT LIMITED TO ANY IMPLIED WARRANTY OF MERCHANTABILITY OR FITNESS FOR PARTICULAR PURPOSE, ARTE LIMITED TO THE DURATION OF THIS WARRANTY.

Some states do not allow limitations on how long an implied warranty lasts and/or the exclusion or limitation of incidental or consequential damages, so the above limitation and/or limitation and/or the above exclusion may not apply to you. This warranty gives you specific legal rights, and you may have other rights which vary from state to state. As its sole responsibility and your sole remedy for any warranted defect, RDP Garden Products will replace any Rainwater Hub containing a warranted defect, free of charge, with proof of purchase and notification within a reasonable period of time (but no longer than 6 months) following the discovery of such defect. For warranty service, email info@rainwaterhub.com